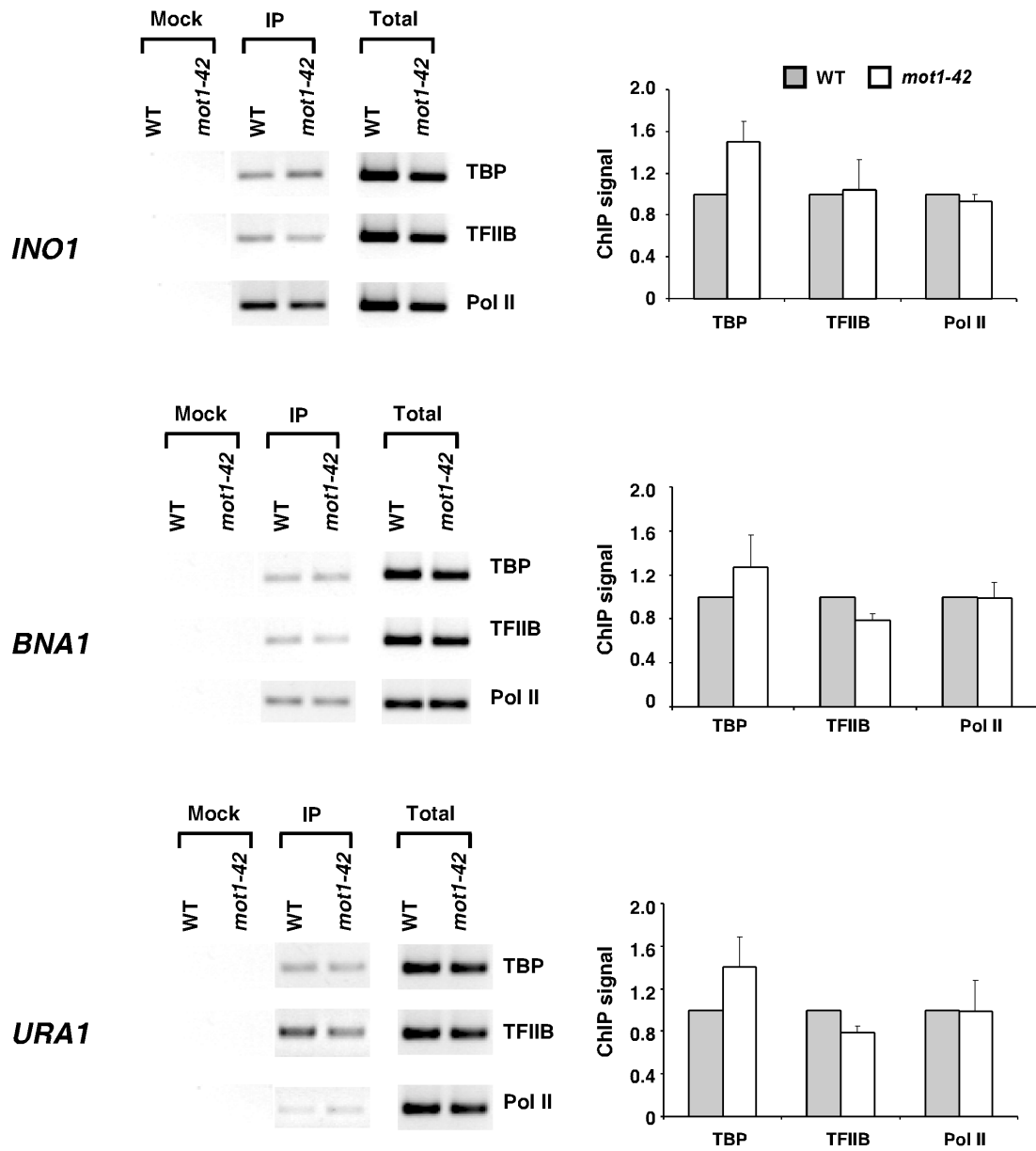


Supplementary figure 2



Supplemental Figure 2. TBP, TFIIB and Pol II binding to Mot1 controlled promoters in the absence of heat shock.

mot1-42 cells display only slight growth impairment at 30°C (Darst et al., 2003). To determine how differences in promoter occupancy depended on heat shock inactivation of *mot1-42*, ChIP was performed at Mot1-controlled promoters using chromatin from cells grown at the permissive temperature of 30°C rather than the nonpermissive temperature of 35°C. Representative results are shown on the left and bar graphs with standard errors summarize the results on the right. Note that occupancy of *INO1*, *BNA1*, and *URA1* promoters by TBP, TFIIB and Pol II is similar in wild-type and *mot1-42* cells.