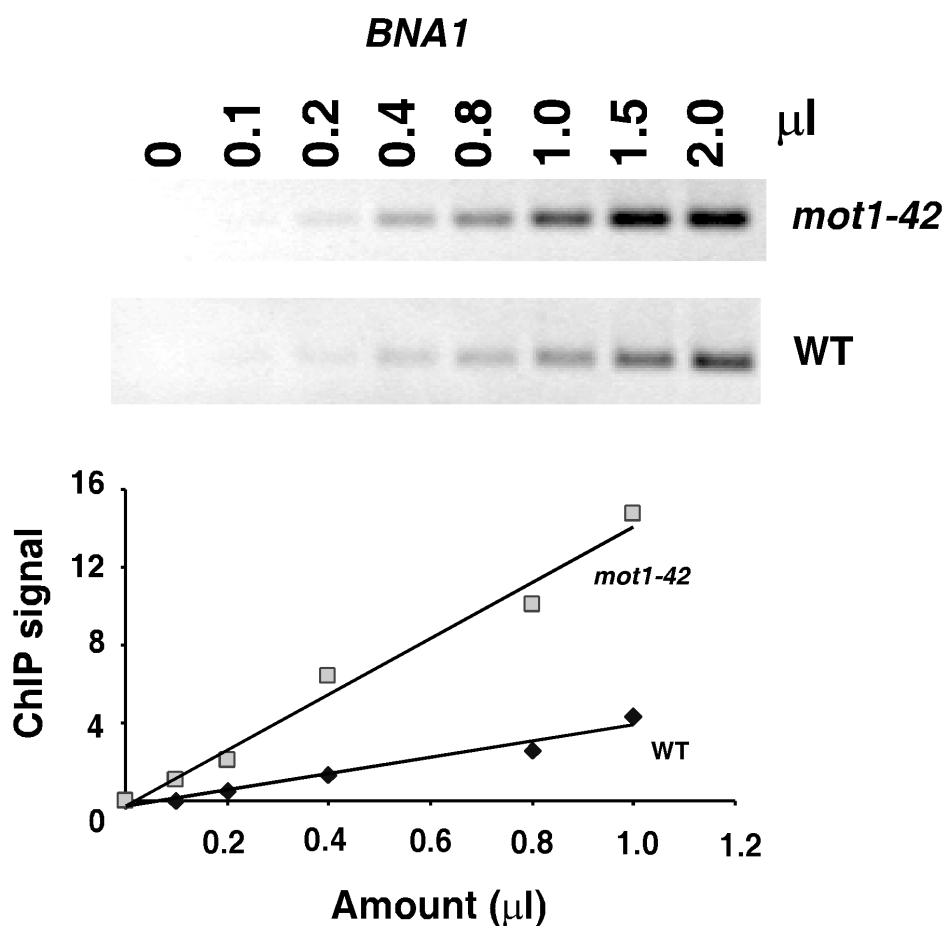


Supplementary Figure 4



Supplemental Figure 4. Dependence of PCR-product yield on the amount of input chromatin template. PCR reactions were performed with increasing amounts of chromatin obtained by immunoprecipitation of TBP-DNA complexes from wild-type (WT) or *mot1-42* cells. The amount of *BNAI* PCR product obtained versus input chromatin substrate is plotted beneath the gel image. Note the linear relationship of input chromatin to PCR product abundance. Similar titrations were performed to establish the linear response range for other ChIPs in this study (not shown).