

**Figure S3:** Autoradiogram of representative DNase I footprint experiment comparing the ability of Mot1 to displace TBPC from TATA Box probes with different lengths of upstream DNA (see Figure 7). Radiolabeled RW2, 6-1 or 5-3 DNA was incubated with 8.8 nM TBPC for ~20 min, then 9 nM Mot1 was added for two minutes followed by addition of 5 ng/ $\mu$ l unlabeled TATA Box DNA and ATP to 25  $\mu$ M for one or five minutes as indicated.

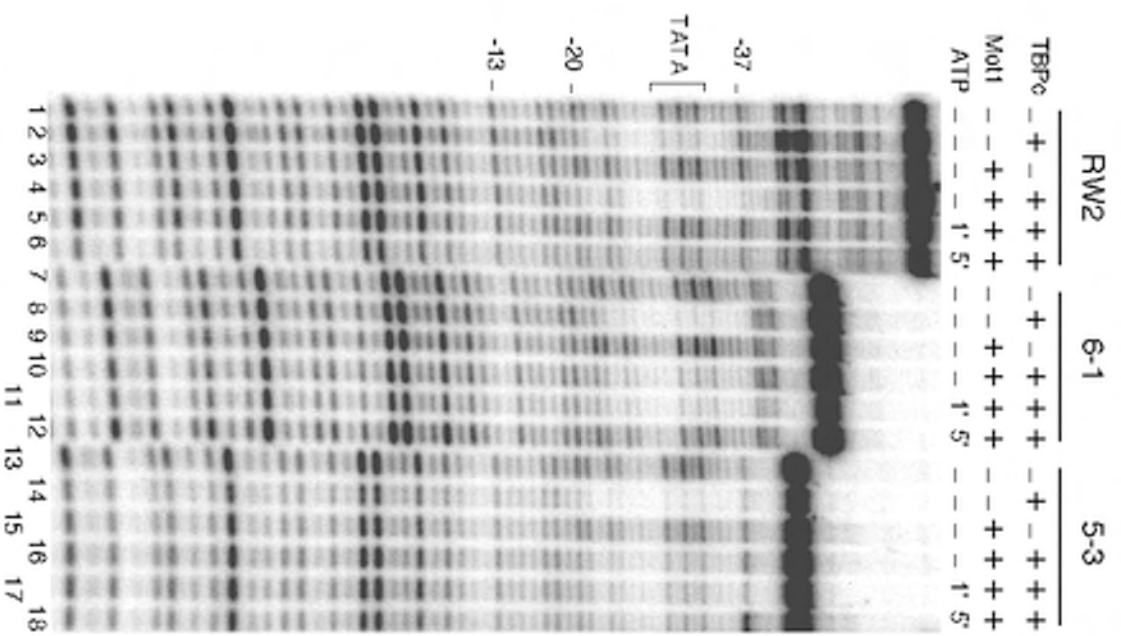


Figure S3