

Figure S4: Mot1-TBPc complexes bind DNA poorly compared to TBPc alone. **A)** Reaction scheme. In (1) 8.8 nM TBPc was incubated with radiolabeled DNA for 5, 10 or 15 min, then DNase I digested. In (2), 8.8 nM TBPc was pre-incubated with 19.2 nM Mot1 for 20 min, then radiolabeled DNA was added and DNase I digestion was performed 5, 10 or 15 min thereafter. **B)** Autoradiogram of representative DNase I footprinting experiment in which components were added as described in **(A)** Ramps indicate increasing times of incubation (5, 10 or 15 min) prior to DNase I digestion.

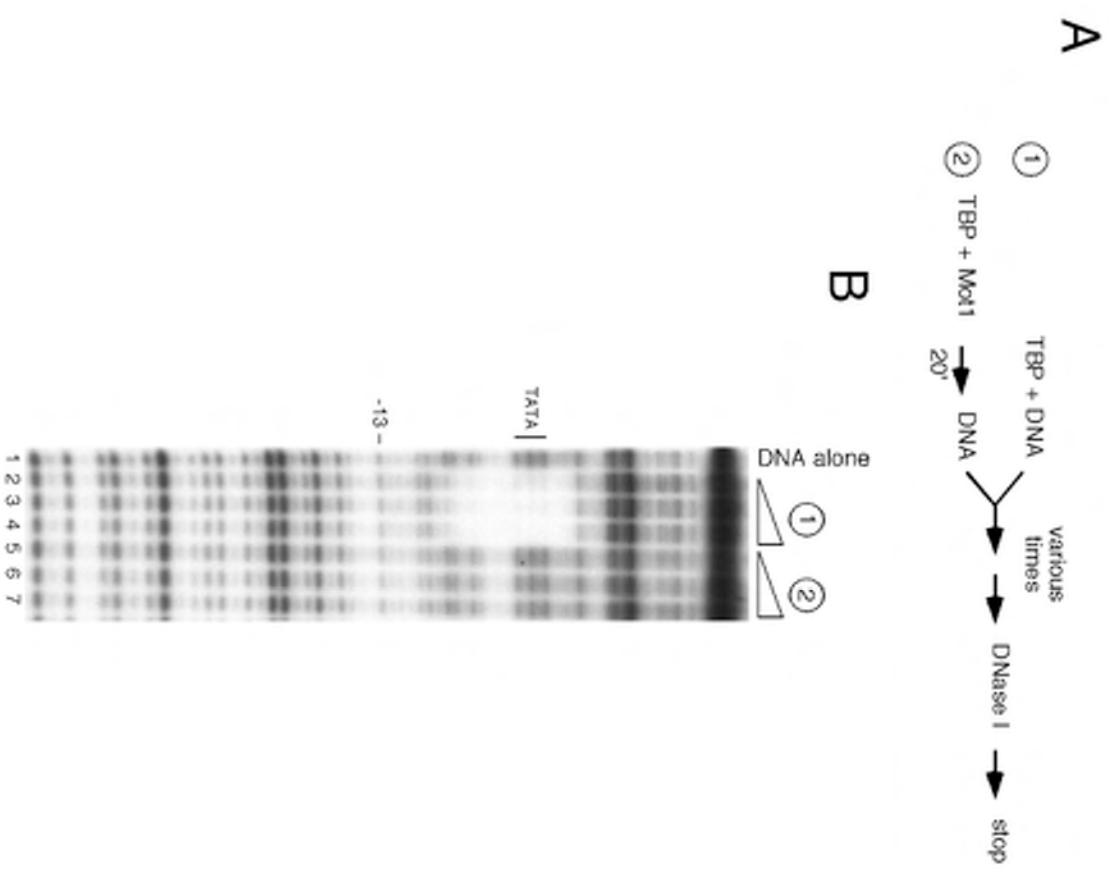


Figure S4